

MS6001B Gas Turbine Reliable and Rugged 50/60 Hz Power

fact sheet

High Reliability and Availability

The proven performance of the MS6001B gas turbine makes it an excellent choice for mid-range power generation service. With a well-documented availability of 94.6%* and reliability of 99.0%*, the 6B turbine features low-cost installation and maintenance requirements.

Designed for reliable 50/60 Hz power generation and 57,500 hp class mechanical drive service, the Frame 6B has accumulated over 45 million operating hours in a wide range of applications, including simple cycle, heat recovery, combined cycle, and mechanical drive.

Flexible Performance

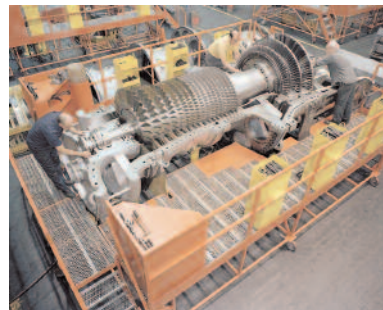
With over 1100 units worldwide, this rugged and reliable 40 MW class gas turbine can handle the multiple start-ups required for peak load, accommodate a wide variety of gaseous and liquid fuels, drive a compressor and be installed quickly for fast track projects.

In combined cycle operation this gas turbine is a solid performer at nearly 50% efficiency—and is also a flexible choice for cogeneration applications capable of producing a thermal output ranging from 20 to 400 million Btu/hr, with steam pressure up to 110 bar without supplementary firing.

With a Dry Low NO_x (DLN) combustion system, this gas turbine is capable of achieving less than 15 ppm NO_x on natural gas, and existing units can be upgraded to 5 ppm NO_x. Easy to install and maintain, its low cost per horsepower and high horsepower per square foot make the MS6001B gas turbine an excellent fit for industrial and mechanical applications.

MS6001B Simple Cycle Performance Ratings

	50/60 Hz Power Generation		Mechanical Drive	
Output	(MW)	42.1	(hp)	57,543
Heat Rate	(Btu/kWh)	10,642	(Btu/hp-hr)	7,703
	(kJ/kWh)	11,226		
Pressure Ratio		12.2:1		12.2:1
Mass Flow	(lb/sec)	311	(lb/sec)	309
	(kg/sec)	141		
Turbine Speed	(rpm)	5,163	(rpm)	5,111
Exhaust Temperature	(°F)	1,018	(°F)	1,019
	(°C)	548		
Model Designation		PG6581B		M6581



An MS6001B rotor is seen on half shell.

MS6001B Combined Cycle Performance Ratings (50/60 Hz)

	Net Plant Output (MW)	Heat Rate		Net Plant Efficiency	GT Number and Type
		(Btu/kWh)	(kJ/kWh)		
S406B	64.3	6,960	7,341	49.0%	1 x MS6001B
S106B	130.7	6,850	7,225	49.8%	2 x MS6001B
S206B	261.3	6,850	7,225	49.8%	4 x MS6001B



MS6001B Simple-Cycle Electroandina Power Plant in Tocopilla, Chile.



For more information, contact your GE representative or visit ge.com/energy.

*Source: ORAP®. All rights reserved: SPS®

© 2008 General Electric Company. All rights reserved.

Printed on recycled paper. GEA-16050A (06/08)